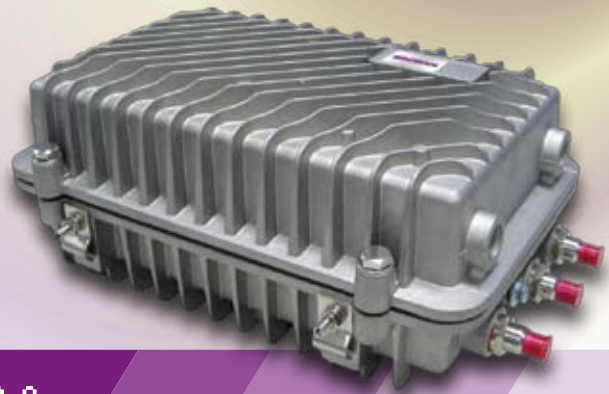


# CTB5000 Series

Cable Express Trunk Bridge Device

V2.0



*express*  
**Cable**

## General Description

CTB5000 series Trunk Bridge Device products are developed as the bridge equipment, based on the definition of MoCA. Its main function is to ensure the data signals at 800~1500MHz frequency band could jump the directional low-band Trunk Amplifier over CATV HFC network and realize the bi-directional transmission coaxial cable network.

## Installation

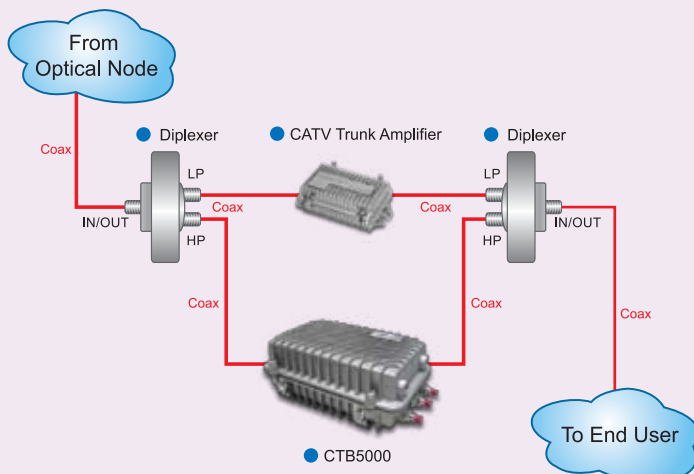
CTB5000 series products are located beside the trunk amplifier in HFC network. A diplexer separates the mixed signals to high-band and low-band frequency and then outputs to CTB5000 and an amplifier respectively, where CTB5000 processes the high-band signals and the amplifier magnifies the low-band signals. Furthermore, another diplexer receives the processed high-band and magnified low-band frequency and then combined them again over the same coaxial cable to the enduser. CTB5000 reduces the accumulated noise dramatically by implementing the process of de-modulation and re-modulation.

## Compatibility

The high-band frequency 800~1500MHz that CTB5000 series products operate will not interfere the existing technology, such as CATV, DVB-C and DOCSIS. It will protect the existing investment of customer.

## Application

▼ Cable Express signal on high frequency band jumps the Direction low frequency CATV Trunk Amplifier by CTB5000.



## QOS

CTB5000 series products use TDMA/TDD technology and support IEEE802.1p priority queues. It possessed low jitter and network latency, so the QOS of multimedia application can be ensured well.

## Management

CTB5000 series products support HTTPS and SNMP. It provides user bandwidth control, centralized user access management, MAC authentication and remote firmware upgrade.

## Flexibility

CTB5000 series products take advantage of modular design, supporting two RF modules, whose data rate can up to 270Mbps. CTB5000 are powered by either 60VAC or 220VAC power source and integrated with full duplex. It supports star or tree topology to provide the most flexibility while deployment for different environment.

## Reliability

CTB5000 series products are designed with high reliability by selecting industry-grade components, low noise frequency band, waterproof aluminum housing and two-level fault recovery mechanism.

## Security

CTB5000 series products support DES encryption and MAC layer isolation to enhance security.

## Features

- ▲ High bandwidth, up to 540Mbps with two modules
- ▲ Symmetrical upstream and downstream
- ▲ Supports 10/100/1000Base-T Ethernet port(Inside)
- ▲ Support embedded diplexer
- ▲ Support Multiple network protocols
- ▲ Software Selectable working mode
- ▲ Support RF auto power control
- ▲ Support user access control
- ▲ Support user bandwidth control
- ▲ Monitor the number of user and activities
- ▲ Support MAC layer isolation
- ▲ Support MAC authentication (RADIUS Client)
- ▲ Support hardware DES encryption
- ▲ Support QOS (Quality of Service)
- ▲ Support DHCP server, Client
- ▲ Support Web management and remote upgrade by HTTPS
- ▲ Support SNMP
- ▲ Support hardware and software watchdog
- ▲ 60VAC or 220VAC power source supported
- ▲ Easy and convenience installation
- ▲ Designed for outdoor environment



*express*  
**Cable**

## CTB5000 Series

Cable Express Trunk Bridge Device

V2.0

### Specifications

Coax Interface			
Frequency band	800~1500MHz	PHY Rate	270Mbps ( max. )
MAC Rate	> 100Mbps(Upstream and Down Stream)	Channels	29
Channel interval	25MHz	Channel Band Width	50MHz
Concurrent users	31	Transmission Distance	600m
Spectrum Spreading	OFDM	Modulation	16/64/128QAM
Multiplexing Methods	TDMA/TDD	Connector	75Ω F type
Transmission Power	0±3dBm		
Receive Sensitivity	-50dBm/270Mbps , -55dBm/200Mbps , -60dBm/150Mbps , -65dBm/50Mbps		
Network Interface			
Ethernet	1Port , 10/100/1000Base-T,RJ45(inside)		
Physical Characteristics			
Dimension	289mmx222mm×120mm		
Weight	3.5kg		
Environment Conditions			
	Temperature	Humidity	
Operating	-25~60°C	95% ( non-condensing )	
Storage	-40~80°C	95% ( non-condensing )	
Electrical Characteristics			
Power Supply	60VAC/220VAC		
Power Consumption	15W ( max. )		
Network Standards			
IEEE802.3 , IEEE802.3x , IEEE802.3u , IEEE802.3z , IEEE802.1d , IEEE802.1p			
SNMP V1/V2 , Https , Telnet			
MOCA			
Warranty			
1 year			
Package Contents			
CTB5000 1pcs			
CD 1pcs			
Warranty Card 1pcs			
Related Products			
CNM7000 Cable Express Network management System			
COA6000 Cable Express Optical Access Device			
CSA4000 Cable Express Subscriber Terminal Adapter			

#### Browan Communications Inc.

No.15-1,Zhonghua Rd.,  
Hsinchu Industrial  
Park,Hukou,Hsinchu,  
Taiwan,R.O.C. 303  
Tel: +886-3-6006899  
Fax: +886-3-5972970

#### Browan Communications Inc.,China

4F, C Building.No.1618, Yishan Rd.,  
Shanghai, China  
Tel: +86-21-64656780  
Fax: +86-21-54222254  
ZIP:201103